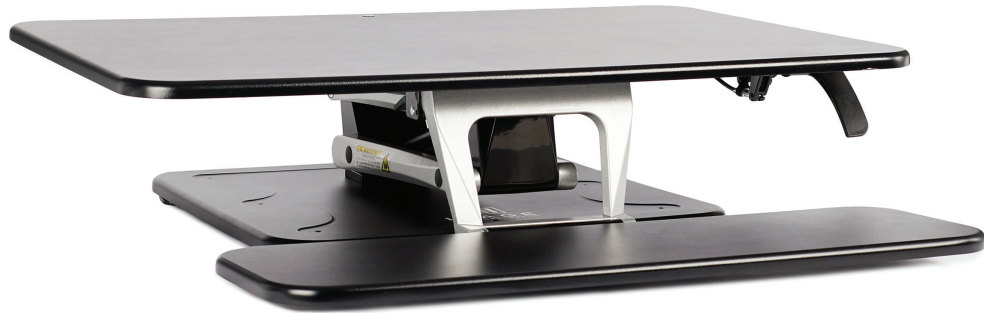




SIT / STAND DESK MT103M-PT



FEATURES & BENEFITS:

- Simply raise or lower the platform with one touch of the lever
- Advanced gas spring mechanism adjusts the standing desk to match your exact height requirements
- Separate keyboard/mouse deck elevates your screens to your level
- Attach the keyboard with a one step assembly. Easily remove it anytime
- The compact design lets you make the most out of your desk area and it's easy to integrate it into your current layout
- Keyboard tray allows for negative tilting, keeping your wrists in a neutral position
- Support groove on surface displays smart phones or tablets

Product Specifications

Model Number	MT103M-PT
Total Weight Limit	< / = 33 lbs (15 Kg)
Desktop Weight Capacity	< / = 28 lbs (12.70 Kg)
Keyboard Tray Weight Capacity	< / = 5 lbs (2.27 Kg)
Worksurface Dimensions	27" W x 20"D (68 x 50.80 cm)
Keyboard Tray Dimensions	27"W x 8" (68 x 20.32 cm)
Height adjustment	7" - 17" (17.78 - 42 cm)
Fits on Tables	Cubicle use 20" (50.80 cm) or deeper
Applied Monitor Size	Up to 24" screens
Shipping Dimensions	35"x 8.85" x 24.37" (88.50 x 22.50 x 61.90 cm)
Gross Weight	55 lbs (25 kg)
Warranty	6 years

Product Dimensions

